

## SPECIFICATIONS

- Material will be high quality 100% recycled grey iron; ASTM A48 class 35b or better; hardness 170-223 brinnell (unless specified otherwise; see below).

### Material:

- Grey iron ASTM A48 (standard)
- Aluminum, ASTM B26
- Ductile iron, (required for all load ratings higher than pedestrian) ASTM A536 class 65-45-12.
- Nickel bronze (ASTM B30)
- Bronze (ASTM B26)

- Finish will be natural patina of raw iron (unless specified otherwise; see below).

### Finish:

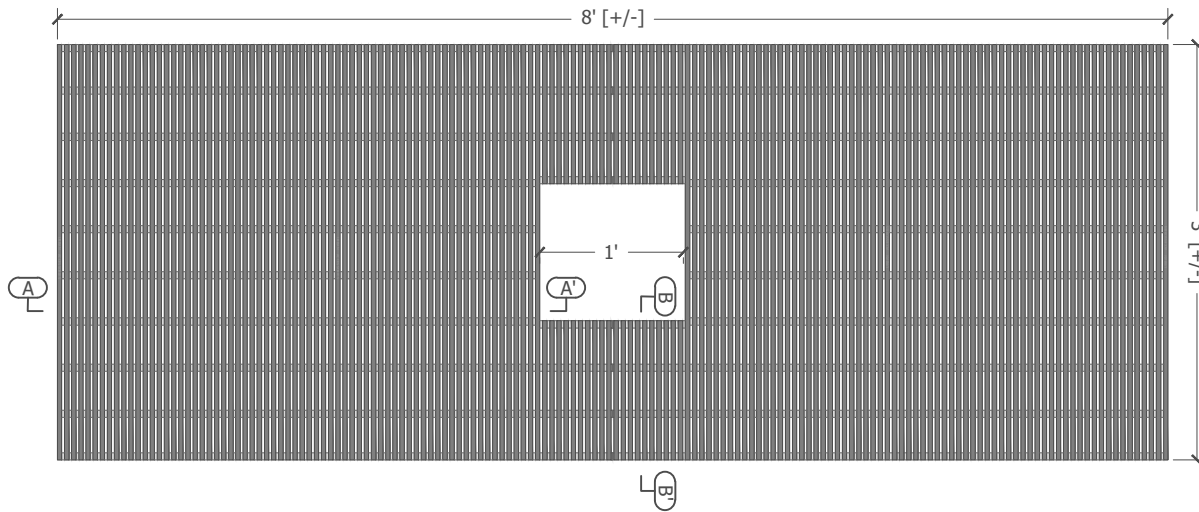
- Raw (standard)
  - Rust conditioner
  - Polyester Powder Coat\*
  - Liquid Coat (wet paint)\*
- Color:  
\*Please specify standard UA color or mfr. name and color code.
- Brush (bronze/nickel/aluminum only)
  - Polish (bronze/nickel/aluminum only)
  - Galvanized (grey iron and ductile iron only)
  - Other:

- Dimensions are nominal.

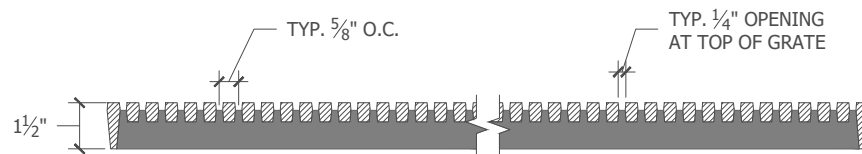
### Notes

- 1) Cast in four pieces.
- 2) Grate is  $1\frac{1}{2}$ " thick at edge.
- 3) Center opening expansions at 1'-9" and 2'-6".
- 4) No openings greater than  $\frac{5}{16}$ ", in conformance with ADA Accessibility Guidelines.

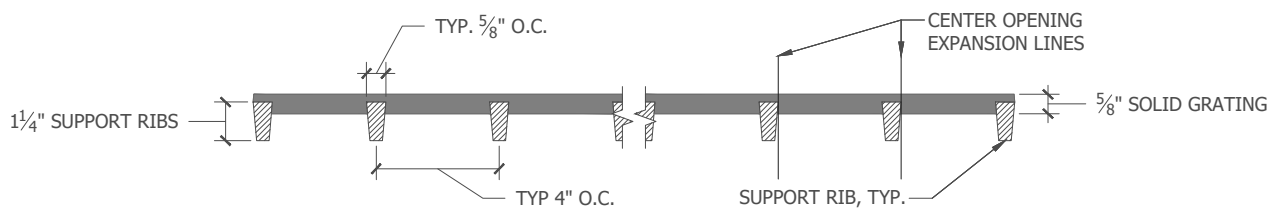
Comments:



## Plan



## Section A-A'



## Section B-B'

## Tree Grate

3' x 8' Jamison

Page: 1 of 1 Date: 9/10/18



465 E. FIFTEENTH ST. sales@urbanaccessories.com  
TACOMA, WA 98421 www.urbanaccessories.com  
(877) 487-0488